

Franklin University

FUSE (Franklin University Scholarly Exchange)

The Franklin Almanac

The Franklin Almanac

6-14-1988

Almanac Vol. 5, No. 8

Franklin University

Follow this and additional works at: <https://fuse.franklin.edu/almanac>

Recommended Citation

Franklin University, "Almanac Vol. 5, No. 8" (1988). *The Franklin Almanac*. 17.
<https://fuse.franklin.edu/almanac/17>

This Book is brought to you for free and open access by the The Franklin Almanac at FUSE (Franklin University Scholarly Exchange). It has been accepted for inclusion in The Franklin Almanac by an authorized administrator of FUSE (Franklin University Scholarly Exchange). For more information, please contact fuse@franklin.edu.



the ALMANAC

FRANKLIN UNIVERSITY

Vol. 5, No. 8 June 14, 1988

Columbus, OH 43215

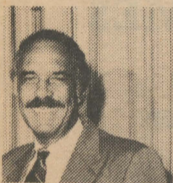
Inside this issue:

- Letters to the editor, p. 3
- Pedal pushers, p. 2
- Success is semi-formal, p. 2

Board members elected



Gary Glaser



Robert Duncan



John Gerlach



William Madia



Thekla Shackelford

By Rose Gorneleh
Editor-in-Chief

Franklin's Board of Trustees have elected five new board members.

The board's general function is the consideration, establishment, and approval of policies for the university, according to the board's articles.

The new members are: Gary A. Glaser, president of BancOhio National Bank; Robert M. Duncan, partner, Jones, Day, Reavis, & Pogue; John B. "Bernie" Gerlach, president/co-founder of Lancaster Colony Corporation; Dr. William J. Madia, president of Battelle's Columbus Division; and, Thekla Reese Shackelford, educational consultant and community service leader.

"I took an accounting course at Franklin after I completed both my undergraduate and masters. I agree in the mission of Franklin and I can personally attest to the quality of education," stated Shackelford.

"As a result of being out in the community I have seen the end product--Franklin's graduates. I have been impressed with everyone I've met. After talking to Dr. Otte, some staff members, and taking a tour of the university, I became excited about being given the opportunity to be a part of it all," stated Madia.

The new members will each serve a term of three years.

Re-elected as officers of the Board of Trustees were Chairman Robert S. Crane, Jr., chairman of the board of both Crane Plastics, Inc. and the Crane Plastics Co., Vice Chairman Paul Werth, chairman of the board of Paul Werth Associates, Inc.; Secretary Thomas Moyer, Chief Justice of the Ohio Supreme Court; and Treasurer Carole Williams, publisher of *Business First*.

Tuition will top \$100 fall trimester

By Tara Moore
Staff Writer

Franklin University will raise tuition beginning fall trimester.

According to Paul Otte, president, tuition will rise \$8 a credit hour from its present \$98, an 8 percent increase.

Otte recently recommended the increase to the Board of Trustees, who approved it.

Otte said that the hike is necessary to "maintain the quality" at Franklin,

He also said the increase would en-

able Franklin to give salary increases to the staff.

Otte added, "We raised it very favorably compared to other institutions."

The other schools, which he could not name, are raising tuition 8 to 13 percent.

According to the Association of Independent Colleges and Universities of Ohio (AICUO), Franklin has the lowest tuition of any private university in Ohio, said Otte.

Franklin attempts to match foundation grant

By Deborah Graber
& Kimberly Schiff

The 1988 Franklin University Phone-a-thon, which began April 18 and continues until July 31, is important because of the need to match the Columbus Foundation Challenge Grant, according to President Paul Otte.

Franklin volunteers are calling Franklin alumni in hopes of raising over \$66,000 to receive more than \$25,000 in additional grants from the foundation, noted Otte.

In addition, Franklin received an extension to attempt to meet the 1988

goal, which was not met in 1987, stated Sandy Woodmansee, director of business and alumni development.

Eight to ten volunteers call alumni Monday through Thursday evenings, said Woodmansee.

Volunteers from Ross Laboratories, BancOhio and American Electric Power have also helped with the phone-a-thon, Woodmansee noted.

Woodmansee added that mass mailings and personal contacts have been made with most alumni, but about 3,000 have yet to be contacted.

Students get assistance with job placement

By Heidi McCormick
Staff Writer

There is only one way for students to get involved in the job placement system at Franklin University, according to Glenda Zempter, placement assistant.

"Students who are interested need to come into the placement office and leave their name," said Zempter.

When the office has six new names, it schedules an orientation meeting for these students, she explained.

The students fill out an interview information form, and when it has been completed, the office starts its services.

The placement office offers three types of services: undergraduate, graduate and year-plus-alumni system, said Zempter.

The undergraduate services are offered up to 12 months before a student graduates.

The office prepares job lists for these students. Those who are unsure of their majors may receive counseling. Soon the job list will also include all open scholarships available, Zempter said.

The graduate services are offered from a year before graduation to a year after graduation.

Zempter said, "These students are eligible for individual counseling on any issue applicable to the immediate job search."

Campus recruiting is another graduate service.

During fall and winter trimesters, the placement office contacts 15 to 30 employers to come to the campus, she continued.

The names of the companies are posted on the job board, and personal letters are sent to the students already in the office's files.

Zempter said the companies send a

list of requirements the students must meet for the job.

Zempter screens the students who are interested to see who is qualified.

Students who meet the job requirements meet with the campus recruiter.

A third service for graduates is called the resume referral system. "The resume referral system is where we place the most students," stated Zempter.

The placement office receives calls from companies who are interested in students with certain skills.

The office sends out the files of those students who fit the description.

Zempter encourages students to call the office frequently to see where their resumes have been sent.

Students who have been graduated for over a year fall in the year-plus-alumni system.

The office keeps these files in a resume book. These students are asked to send a complete resume, and a cover letter that includes job objectives, she said.

The resumes are filed in the book by job interests. Companies who may want someone with more experience look through these files, she explained.

Zempter has been the placement assistant at Franklin University for three years.

Zempter said, "The spirit of co-

operation at Franklin University is what makes my job so enjoyable."

Zempter added, "The students at Franklin have a very mature attitude. They do not have unrealistic expectations about the job market."

Hess sets goals

By Tracey Long
Special Writer

Lee Hess, vice president of marketing, is the only woman vice president at Franklin University. She was appointed to this position in March, 1987.

Her degree from Franklin and previously held positions have enabled her to reach this level of achievement, she said.

Her degree from Franklin is in Business Administration. She concentrated in marketing, public relations and advertising.

Before her position at Franklin, Hess worked as the regional Midwest director for the Osmond Foundation.

She dealt with marketing promotion and development for telethons. These telethons raised money for children's hospitals in the United States and Canada.

Prior to the Osmond Foundation she was the director of administration for Applied Information Technical Research Center (AITRC), a company she helped set up.

Hess has also served as assistant development director for Children's Hospital.

She was responsible for the telethons and raised over \$1.5 million in two years.

Hess stated, "All three jobs in marketing, development and public relations, plus my degree from Franklin, prepared me for my current position."



Lee Hess

At Franklin, Hess oversees admissions, financial aid, marketing, communication, development, and alumni relations.

Her main goals this year include increasing enrollment and marketing the university.

She remarked, "I enjoy working with people and it is great working for my alma mater. What we are doing here is really benefitting the community and many people."

She advises students that many opportunities exist "out there." She added, however, "You must work hard to achieve your goals."

Senate sponsors semi-formal

By Deborah Graber
Staff Writer

About 108 tickets were sold for the first Franklin University Semi-formal, held May 27 at Monaco's Palace.

"The event was a success and we plan to do it again next year, possibly during the winter trimester," said Cathy Johnson, Student Senate president.

"I was pleased with the turnout and very impressed with how hard the senators worked on making this event a smashing success," she continued.

"Our attempt was to sponsor an event that would bring together students and faculty for an elegant, but relaxed, evening," said Johnson.

The ticket price of \$25 per couple or \$15 per single covered the meal.

The Student Senate paid for the live entertainment and the flowers provided to all the women.

"The service and hospitality were excellent, the food was delicious and everyone enjoyed themselves," added Johnson.

Bicycle club organized

By Heidi McCormick
Staff Writer

The recently formed Franklin University Cycling Club consists of beginner and professional bikers.

The four Franklin students that started the club are Jerry Meyer, Ken Erickson, Mike Pontones and Larry Buehler.

The club will ride every Sunday. Antrim Park, an eight-mile bike path, is just one of the places the club plans to ride.

The cycling club will also participate in bike tours.

The members have discussed signing up for the 1988 Sunny 95/Diet Pepsi Bike Tour for Multiple Sclerosis.

The club's purpose is simple. Buehler said, "We wanted to bring people together who like to bike."

Buehler added, "Biking is an easy way to get into shape and to have fun

with other people at the same time."

Meyer said it is boring to ride alone. He added, "Biking is a great way to meet people."

The club currently has 24 members.

Students interested in joining can sign up in the Student Activities Office.

RESUMES

- * expertly written
 - * personalized
 - * attractively designed
- writer with MA from OSU

861-5980

QUALITY CAR SERVICES INC.

Auto Leasing

New and late models, specializing in exotic and classic.

*Boats *RVs *Trucks

SATISFACTION GUARANTEED.

CALL: (614) 258-2122

Detail Car Cleaning and Reconditioning

We will pick up and deliver your car at home or work.

3053 E. 14th Ave.
Columbus, Ohio 43219

Chodosh & Chodosh Attorneys at Law

Louis Jay Chodosh
Franklin University
Adjunct Professor

Sheila R. Chodosh

General Practice

including

- * OMVI
- * Domestic Relations
- * Employment Disputes
- * Auto Accidents

Reduced fees for Franklin Students

246 E. Sycamore St.
(near German Village)

221-8049

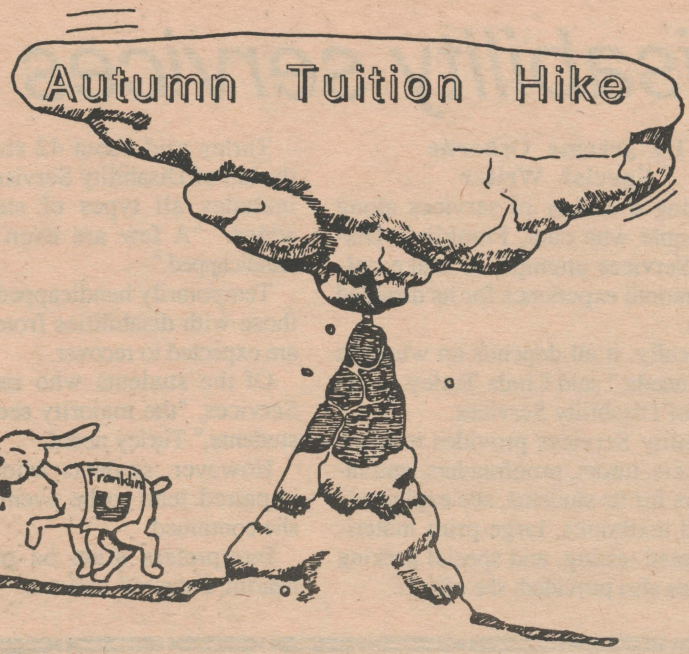
24 Hour Service

Rose Gorneleh
Editor-in-Chief

Terry Bacus, Jr.....Editor Emeritus
Mike Carroll, Tara Moore
Heidi McCormick.....Staff Writers
Sameh A. Ibrahim.....Business Manager
Jerome Osborne.....Graphic Artist
Communication 116
Newsediting Class.....Special Editors
Dr. Susan Opt.....Adviser

The Almanac is printed four times a trimester and is published by the students of Franklin University, 201 S. Grant Ave., Columbus, OH 43215-5399. Telephone 614-224-6237

Editorials reflect a majority opinion of the editorial staff. Views expressed in columns and cartoons are those of the writers and artists and do not necessarily reflect the consensus of the staff.



The dog days of summer. . .
the rocky truth of "fall". . .

481-8895

DAN GRANT AGENCY
Life, Auto, Home, Health

Dan Grant

1474 Grandview Ave.
Columbus, Ohio 43212

LETTERS TO THE EDITOR

To the editor:

I just read the very superficial article in the May 17, 1988, *Almanac* that discussed AIDS Awareness Week, as declared by the governor.

It is obvious from reading the article that the staff is generally not interested in providing information to the student and university community about AIDS. This is unfortunate.

It is also obvious that you are unaware that there is active research on AIDS being done here at Franklin University. I am doing the research under the supervision of Dr. Phyllis Watts-LaFontaine.

A working draft of the research is available to anyone who is interested. I think people will find it of great interest.

Dr. LaFontaine and I are currently attempting to get grants so that the initial research may be continued and expanded.

If anyone would like to discuss the research with me, please feel free to contact me.

I work in the Phillips Hall faculty office from 1 p.m. to 4 p.m., Monday through Friday. I would welcome speaking with you.

Dennis M. Richards
student

offer some clarification to this statement.

There are many, many more than nine scholarships available to potential and present students.

As of May 25, we have awarded 37 and leadership Scholarships and two Battelle scholarships for the fall trimester. Currently, the scholarship committee is reviewing 13 applications for 10 Frasch scholarship recipients for the fall trimester.

Other scholarships available for the fall trimester are:

1. The Grand Lodge of Free and Accepted Masons of Ohio scholarship
 2. Bunte Memorial Presidential scholarship
 3. Frederick J. Bunte scholarship
- All of these have a deadline date of July 1, 1988.

There will be an additional 23 private donor scholarships available for the fall trimester.

The applications will become available around June 15. Signs will be posted in classrooms and in the showcase in the main hallway of Frasch Hall.

There will be more scholarships available for the winter trimester.

When scholarships become available (at different times throughout the year), signs are posted throughout the university.

Once again, many, many different types of scholarships are available for Franklin students.

Other types of assistance available for students to apply for are: Pell Grant, Ohio Student Choice Grant, Ohio Instructional Grant, Supplemental Grant, Perkins Loan, Guaranteed Student Loan and College Work-Study Program.

If you would like additional information, please contact the Financial Aid Office at your convenience.

Our office hours are Monday-Thursday 8 a.m. to 6 p.m.; Friday 8 a.m. to 5 p.m. and Saturday 9 a.m. to noon.

Barbara Metheny
Financial Aid

To the editor:

I think it is important to correct an error that must have occurred in the writing or editing of the *Almanac* article on cross registration.

When Franklin University students cross register to take a course at another institution, that course grade WILL appear on their Franklin transcript.

The grade being recorded on the Franklin transcript is a definite advantage for participating students.

K. Sue Foley
Dean, College of Arts and Science

To the editor:

In the April 26, 1988, *Almanac*, it stated that there were nine scholarships available for fall and winter. The Financial Aid Department would like to

ART AT AN AFFORDABLE PRICE
NOW OPEN

BLACK ARTS PLUS

AN ART GALLERY DEDICATED TO THE
ENRICHMENT AND EXPOSURE
OF BLACK CULTURE

51 PARSONS AVENUE, COLUMBUS, OHIO 43215
(614) 469-9980

Prints by National and Local Artists:
Ernie Barnes Varnette Honeywood
Ray Batchelor Annie Lee
Raymond Cody Ellis Wilson
Joseph Holston Gilbert Young
Larry Collins Jeff Clark
Brenda Joysmith (and others)

Prints make excellent gifts for:
Birthdays, Anniversaries, Weddings and Holidays

Extras:
Custom Framing, Greeting Cards, Art Parties

Terms:
Cash, Check, Visa, Discover,
American Express, Layaway

Disability services helps smooth experience

By Jerome Osborne
Special Writer

Offering a variety of services along with people who care, Franklin's Disability Services attempts to make college a smooth experience for its disabled students.

"Basically, it all depends on what the student needs," said Linda Turley, coordinator of Disability Services.

Disability Services provides readers, note-takers, tutors, proofreaders, and interpreters for its students, she explained.

Taped textbooks, large-print materials, adapted testing, and special parking spaces are also provided, she added.

Turley said about 42 students enlist the aid of Disability Services. "And that includes all types of students," she added. "A few are even temporarily handicapped."

Temporarily handicapped students are those with disabilities from which they are expected to recover.

Of the students who use Disability Services, "the majority seem to be day students," Turley noted.

However, students who are hearing impaired tend to be evening students, she continued.

Interpreters must be provided for hearing impaired students.

Cheryl Pettry works for Interpreting Services, which provides interpreters at Franklin.

Though her job is a tough one, "it's just what I wanted to do," she said.

Pettry studied sign language at Gallaudet University, a school for the deaf, and received a degree in interpreting from Rochester Institute of Technology.

"(Deaf people) are just like everyone else, but (the only difference is) they can't hear," she said.

Turley feels disability services are an important part of colleges and universities.

She noted over a million people in Ohio are considered to be disabled.

NEWS BRIEFS

Student activities will sponsor a golf outing Sunday, July 10, noon, at Thorn Apple Golf Course. The green fee is \$10 and carts are \$14.50.

Jody Beresford will be conducting an Assertion Group that will meet on these Tuesdays from 6-8:30 p.m.: June 14, 21, and 28. To register, contact Cathy in room 115 Frasc Hall or call 224-6237, ext.224.

Need help with math? Free tutoring labs are available to Franklin students on Saturdays from 10 a.m. until noon in room 311 Frasc Hall.

Assistance is available with the following courses: Statistics I, Finite

Math, and Business Calculus.

Math labs are also offered on Monday and Wednesday nights from 6:30-8:30 p.m. in 212 Frasc Hall.

Assistance is available with the following courses: Re-entry, Intro to Algebra, Pre-College Algebra, College Algebra and Trig., Calculus A & B, Business Calculus, and Finite Math.

The Admissions office is seeking a people-oriented, dependable individual to temporarily serve as the full-time admissions receptionist from mid-June through mid-September.

Duties include taking calls from prospective students, scheduling appointments and tours, greeting visitors, data entry, typing, filing, and assisting with mailings.

High school degree required and office experience preferred. For details, contact Nancy Nikiforow at 224-6237, ext.358.

Don't spend the summer typing!
Reports, resumes, and general typing, next day service available. Call collect 1-(513) 834-2784

A MEMBER OF THE SEARS FINANCIAL NETWORK

(614) 871-0003 BUSINESS
(614) 866-2636 RESIDENCE

COLDWELL BANKER

EDDIE POWELL

COLDWELL BANKER
RESIDENTIAL REAL ESTATE
2188 STRINGTOWN ROAD
GROVE CITY, OH 43123

FORMERLY BUYOHIO INC. REALTORS

* RESIDENTIAL * VACATION HOMES
* COMMERCIAL * ASSIST IN STUDENT HOUSING
* INVESTMENTS

ANYWHERE IN AMERICA!

DOWNTOWN DONUT & DINER
(Formerly known as the Downtown Donut Shop)

261-9083 280 S. Grant

40 Types of Donuts Bagels
Bismarks, Cinn. Rolls, Juice, Milk, Pop
Custard, Apple Fritter, Yogurt & Soft Serve
Jelly, Blueberry, Shakes, Malts
Devils Food Salads

Call ahead for quantity orders

Breakfast Special every day
"Best Breakfast Sandwich in town"

Daily Lunch Specials: Sandwiches:
Meat loaf, Lasagne, Reuben, Roast Beef
Coney Dogs, Hot R. Beef Chicken Salad
Rib Eye Steak Sand. Tuna Salad
Shrimp Basket Cheeseburger
Homemade Soups & Chili Corn Beef, Subs

"Call ahead for Carry Out,
Party Trays & Catering"

Across from Phillips Hall at Main & Grant



A
Positive
Image

Hair

Call KATHY
for an appointment
443-7727

827 Parsons