

Franklin University

FUSE (Franklin University Scholarly Exchange)

Learning Showcase 2016: A Celebration of
Discovery, Transformation and Success

International Institute for Innovative Instruction

10-7-2016

Community Data, Visualized

Sarah Goodman

Community Research Partners

Follow this and additional works at: <https://fuse.franklin.edu/ss2016>



Part of the [Community-Based Research Commons](#)

Recommended Citation

Goodman, Sarah, "Community Data, Visualized" (2016). *Learning Showcase 2016: A Celebration of Discovery, Transformation and Success*. 24.

<https://fuse.franklin.edu/ss2016/24>

This Presentation is brought to you for free and open access by the International Institute for Innovative Instruction at FUSE (Franklin University Scholarly Exchange). It has been accepted for inclusion in Learning Showcase 2016: A Celebration of Discovery, Transformation and Success by an authorized administrator of FUSE (Franklin University Scholarly Exchange). For more information, please contact fuse@franklin.edu.

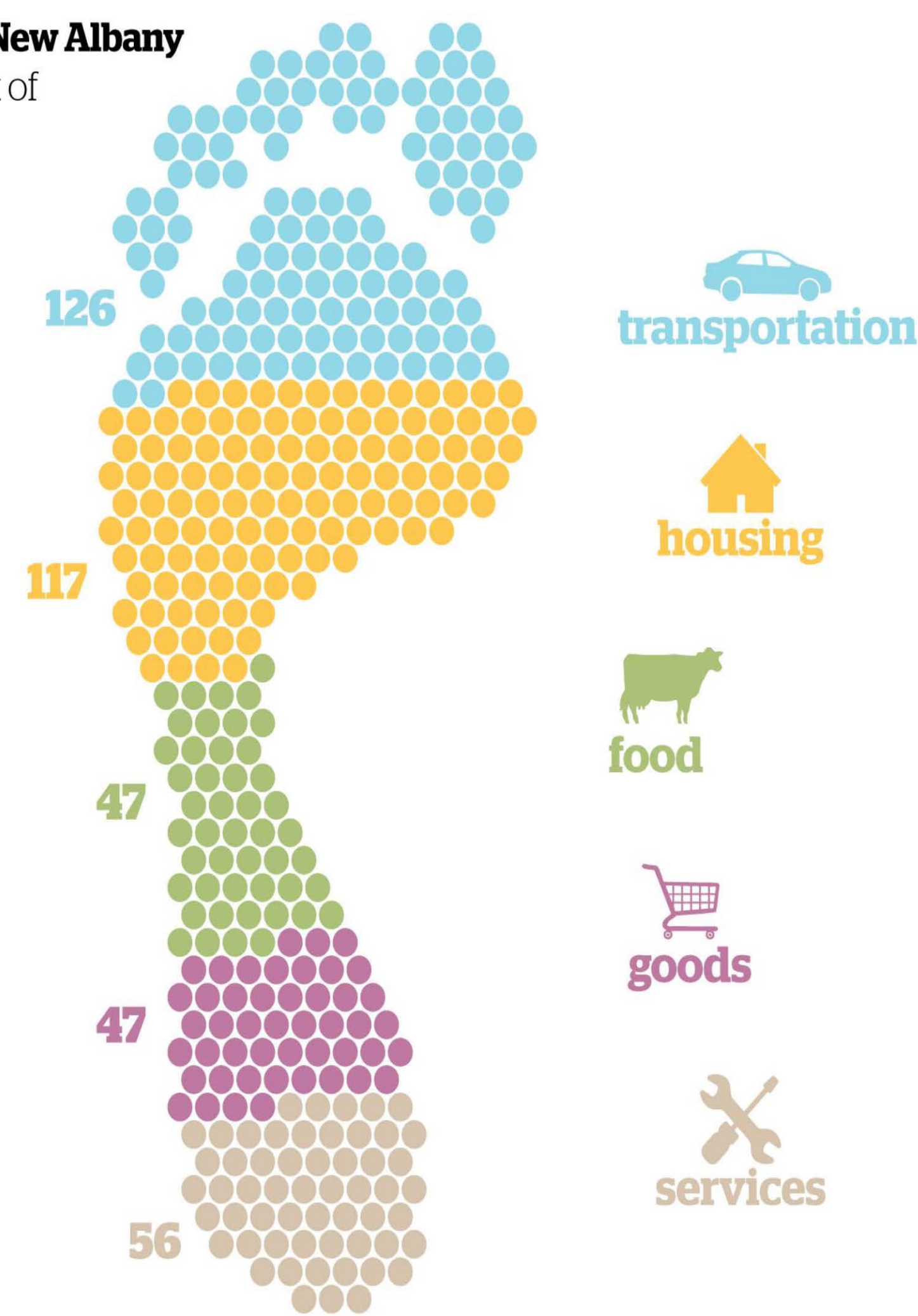
CRP produces **data visualizations**, called **DataBytes**, on a monthly basis. DataBytes provide a snapshot of a topic of importance to our community, region, or state today. The topics cover a wide range of social and economic issues such as student debt, carbon footprint, food security, child care, etc.

DataBytes can be lighthearted, as in our April Fool's DataBytes, or introduce our audience to a serious but relevant issue, such as our Distracted Driving DataByte. These sharable graphics are great conversation starters, but also serve as resources to interesting or important local information.

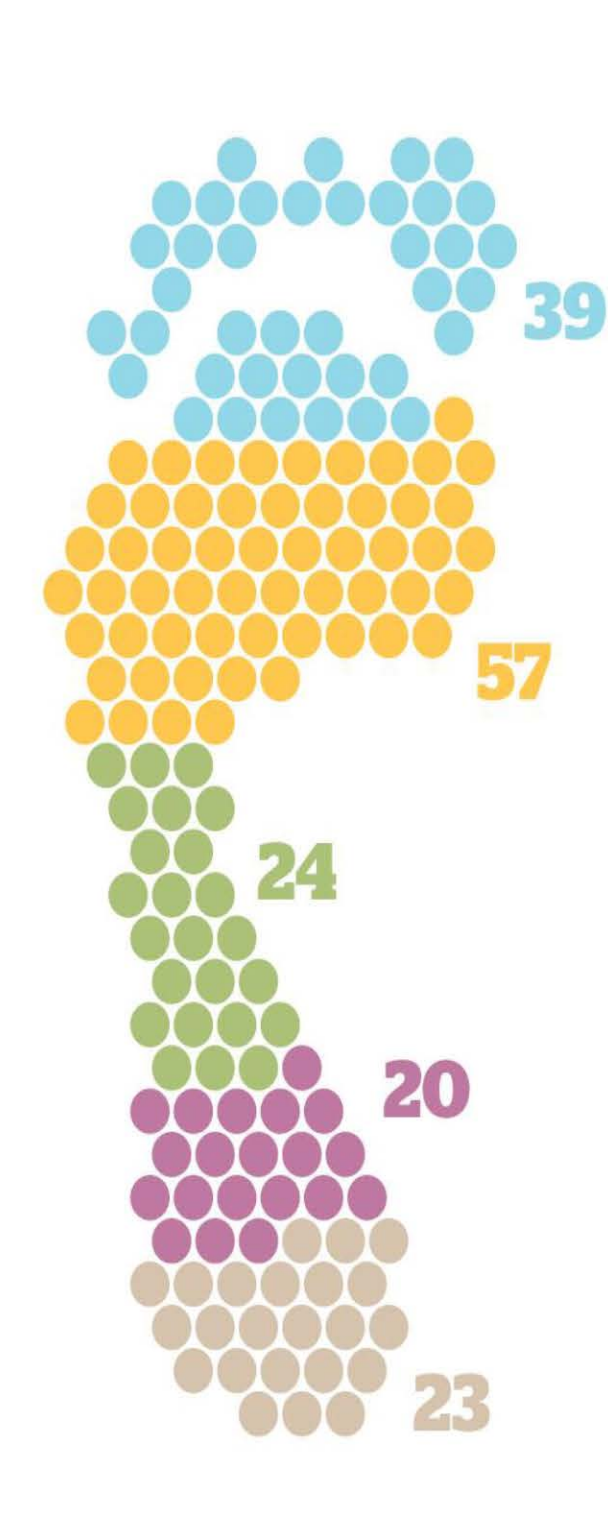
Carbon footprint in central Ohio: downtown vs. the suburbs

The average household carbon footprint in central Ohio varies considerably based on where people live. Households in New Albany have a much larger carbon footprint than those in Downtown Columbus!

The average household in **New Albany** has a daily carbon footprint of **393** pounds of CO₂ per day, the largest in central Ohio...



...while the average household in **Downtown Columbus** has the smallest footprint in the region: **163** pounds of CO₂ per day

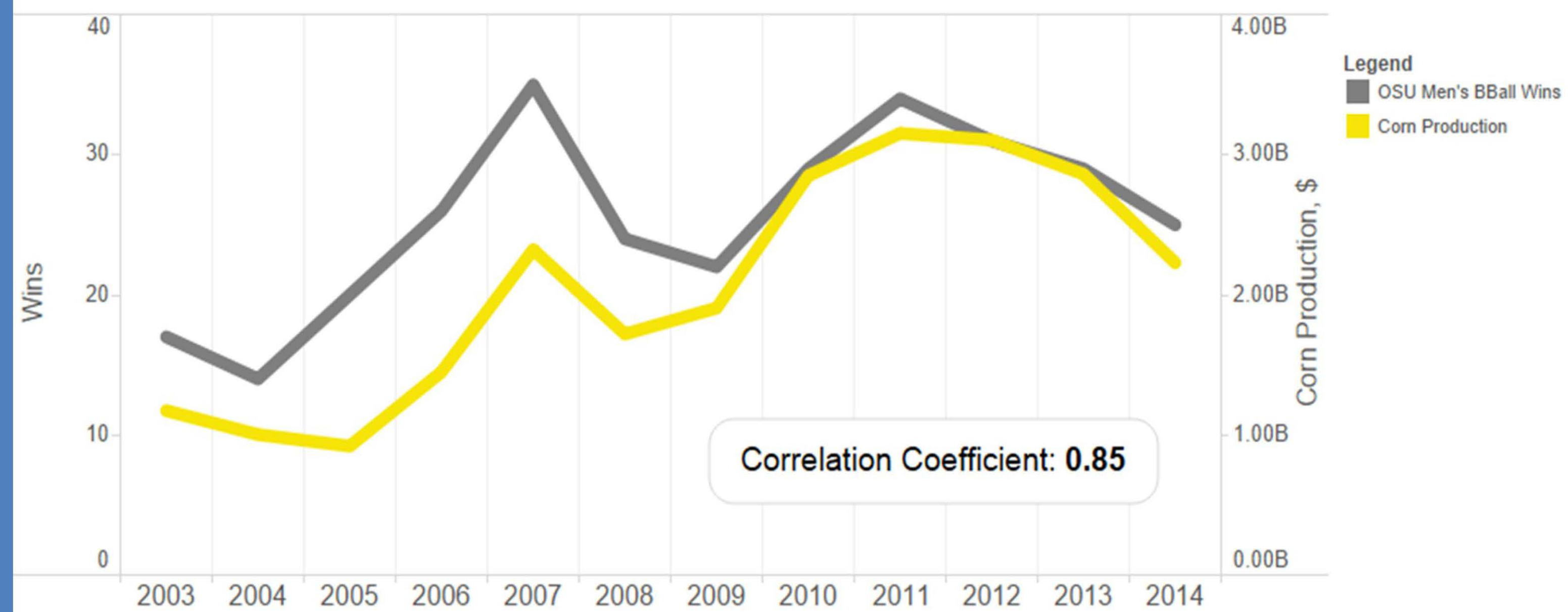


for more information contact:
lcook@researchpartners.org
www.researchpartners.org

April Fool's DataByte: Correlation between OSU basketball wins and Ohio corn crop

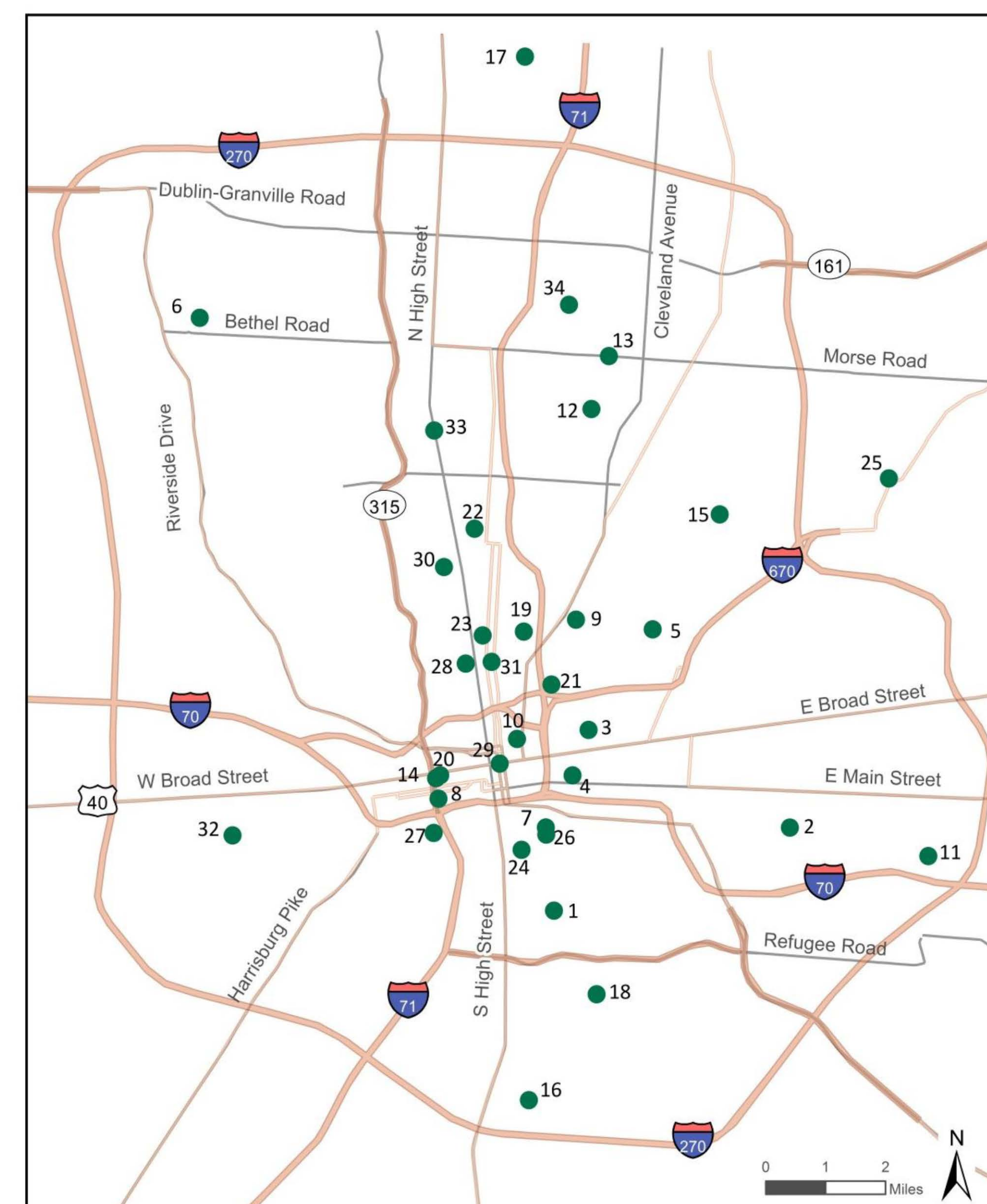
With some careful selection of data, we found a correlation between OSU Men's Basketball wins and Ohio corn crop production. Alas, as tempting as it is to assume a cause-and-effect relationship, this correlation does not imply causation. Be a smart data consumer – don't be fooled into making cause-and-effect assumptions about unrelated datasets!

OSU Men's Basketball Lost in 3rd Round -
Should Ohio's Farmers Prepare for a Loss?



Cold Weather Warming Stations

This map shows the 34 Warming Stations supporting the homeless community in the Columbus area this winter. The original DataByte includes location and hours of operation for each Warming Station.



DataByte Decision-Making Process

(VITAMIN D)

Visualizable:
does the content lend itself to graphic depiction?

Interesting:
does it add something new to the field?

Topical:
community issue, relevant date?

Achievable:
in about 20 hours?

Mission:
does it tie into CRP's mission statement?

Indicative:
does it demonstrate what we do?

New:
contains original research, or a "twist" on existing research?

Data:
available and reliable?

Sarah Goodman, MCRP
Senior Research Associate
sgoodman@researchpartners.org