

Franklin University

FUSE (Franklin University Scholarly Exchange)

Learning Showcase 2014

International Institute for Innovative Instruction

11-14-2014

Franklin County Adult Probation Department

Antoinette Leigh
Franklin University

Follow this and additional works at: <https://fuse.franklin.edu/ss2014>



Part of the [Criminology and Criminal Justice Commons](#)

Recommended Citation

Leigh, Antoinette, "Franklin County Adult Probation Department" (2014). *Learning Showcase 2014*. 70.
<https://fuse.franklin.edu/ss2014/70>

This Presentation is brought to you for free and open access by the International Institute for Innovative Instruction at FUSE (Franklin University Scholarly Exchange). It has been accepted for inclusion in Learning Showcase 2014 by an authorized administrator of FUSE (Franklin University Scholarly Exchange). For more information, please contact fuse@franklin.edu.

Scott Horstman

- Support Officer in the Department of Probations
373 South High St. 10th Floor
Columbus, OH 43215
(614)525-3700

Franklin County Adult Probation Department

Antoinette Leigh

Franklin University



Franklin County Adult Probation Department

The Franklin County Adult Probation Department was created in 1945 and was located 401 South High St. in downtown Columbus. The first chief was Joseph H. Palmer and he grossed \$4500 a year.

The mission of the Franklin County Adult Probation Department is to assist in the protection of the community by safely and effectively supervising probationers and pre-trial reporters at the most appropriate level to affect habilitation and rehabilitation.

This is a collaborative department that works together to ensure quality of services.

Community Corrections Act of the state of Ohio (1979): In Ohio, community-based alternatives to prison were established in HB 1000, also known as the Community Corrections Act (CCA).

Current Chief Probation Officer is Gayle Dittmer and has been so since 2008. The Chief probation officer oversees management and administration of both the juvenile and adult probation departments.

There are currently 24 basic level probation officers and 16 intense level supervision officers in the adult probation department. Average caseload for basic level officers is 163 and for intense supervision officers is 50. There are currently 1,059 probationers on minimum security probation, 2,410 on medium level probation and 4,463 on maximum level supervision.

Organizational Structure

Given the diversity in size and scope of criminal justice agencies across the country, it is not possible to describe an organizational structure to all or even most organizations" (Stojkovic, Kalinich, and Klofas p. 25).

Organic organizational structure: flexible and staff performs a variety of daily task. Although organic, it has mechanistic traits. Mechanistic organizations are stable and are based on strict rules and downward communication. No one organization will be completely one or the other

2012 Annual Probation Survey

CJ-8 OMB No. 1121-0064; Approval Expires 08/31/2014

WESTAT
BJS Annual PIP Survey
RW-2634
1600 Research Boulevard
Rockville, MD 20850-3129

FORM CJ-8
(10-25-2012)
2012 ANNUAL PROBATION SURVEY
U.S. DEPARTMENT OF JUSTICE
BUREAU OF JUSTICE STATISTICS

PLEASE ENTER THE CONTACT INFORMATION FOR THE PERSON FILLING OUT THIS FORM

Name _____ Title _____

Address 1 _____

Address 2 _____

City _____ State _____ Zip code _____

TELEPHONE _____ FAX _____

EMAIL ADDRESS _____

AGENCY UID _____

GENERAL INFORMATION

- If you have any questions, call the Agency Support Team, Westat, at 1-888-371-3718, or email bjs-aps@westat.com.
- Please complete the questionnaire before February 28, 2013 using the web-reporting option at www.bjs-aps.org, by mailing the completed questionnaire to WESTAT at the address above, or by faxing all pages toll-free to 1-888-371-3946.

Who is covered by this survey?

- INCLUDE all adults regardless of conviction status, who have been placed under the supervision of a probation agency as part of a court order. (Adults are persons subject to the jurisdiction of an adult court or correctional agency.)
- INCLUDE adult probationers legally your responsibility but supervised outside your jurisdiction, such as through an interstate compact agreement.
- INCLUDE adult probationers contracted out to private agencies.
- INCLUDE adult probationers on active, including those who report electronically, or inactive supervision or in a residential treatment program but not in regular contact with a probation authority.
- INCLUDE absconders who have not been discharged from probation.
- INCLUDE adult probationers who may be under local jurisdiction but not reported separately by another agency.

Who is not covered by this survey?

- EXCLUDE juveniles (persons under the jurisdiction of a juvenile court or agency).
- EXCLUDE interstate compact cases supervised by your jurisdiction for another state.
- EXCLUDE adult probationers supervised by your jurisdiction but legally the responsibility of another jurisdiction.

Burden statement

Under the Paperwork Reduction Act, we cannot ask you to respond to a collection of information unless it displays a currently valid OMB control number. Public reporting burden for this collection is estimated to average 1.5 hours per response, including the time for reviewing instructions, searching existing data sources, gathering and maintaining the data needed, and completing and reviewing the collection of information. Send comments regarding this burden estimate or any aspect of this collection of

Results

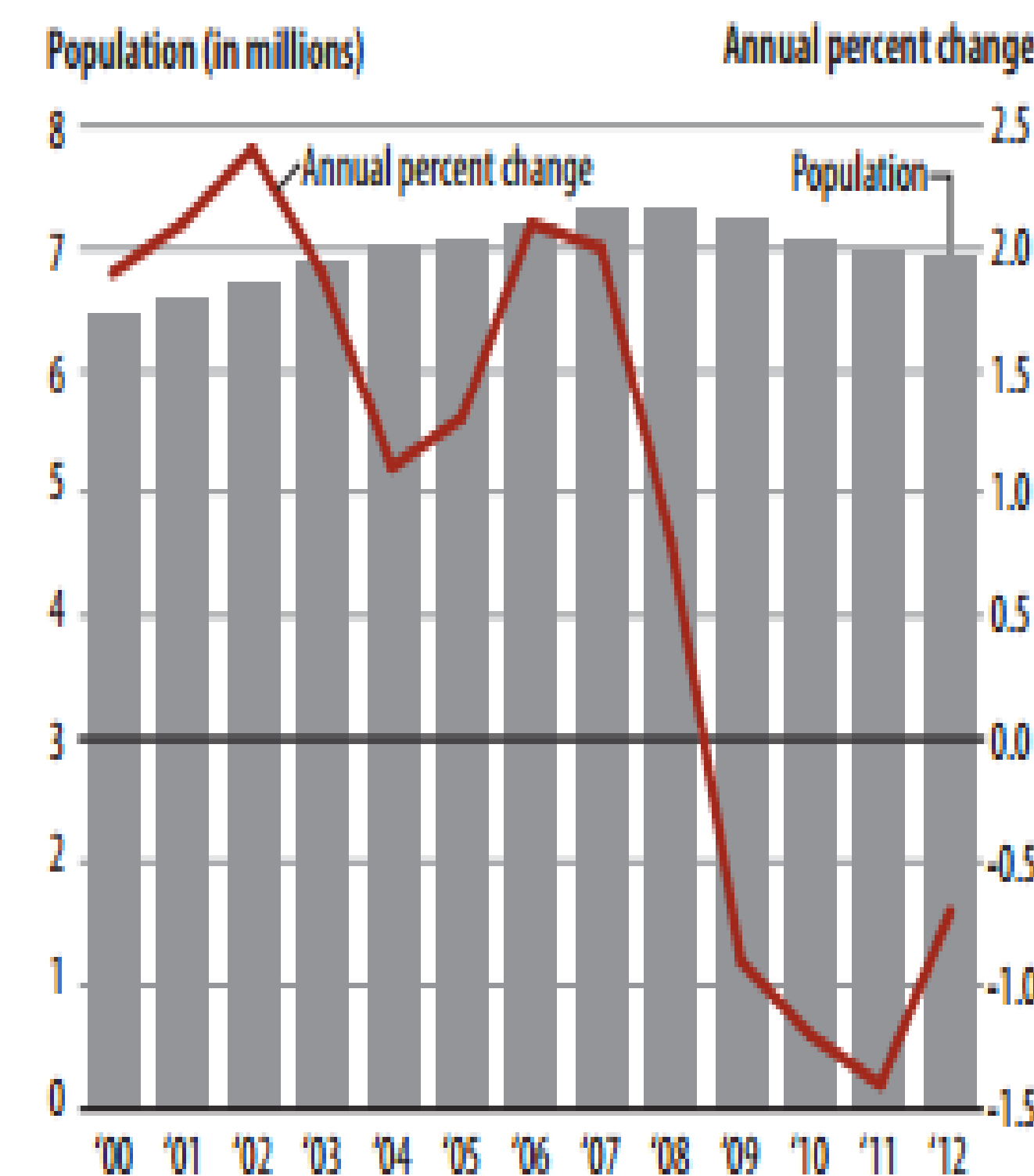
At the end of the year of 2012, there were about 6,937,600 offenders on probation which was down by about 51,000 from the beginning of the year. This was the fourth consecutive year of decline in the correctional population.

Most of the persons placed on probation for a misdemeanor successfully completed their probation terms. Most of the people placed on probation for a felony reoffend. (65%).

New programs being developed: Deferred sentence –probationer complete sentence and withdraw guilty plea expunging their record.

FIGURE 1

Total population under the supervision of adult correctional systems and annual percent change, 2000-2012



Note: See Methodology for information on the methods used to calculate annual change in the correctional population.

Sources: Bureau of Justice Statistics, Annual Probation Survey, Annual Parole Survey, Annual Survey of Jails, Census of Jails, and National Prisoner Statistics Program, 2000-2012.

The Future of the Probation Department

The effectiveness of probation varies by the offense of offenders. Recidivism rates are low among those placed on probation for a misdemeanor.

Some aspects of probation that might be present in the future:

- more intense supervision
- screening and classification systems will continue to guide the level of probation services
- efficiency and accountability will continue
- a fee imposed on probationers ... etc..

Bibliography

- Gaines, L. K., & Miller R. L. (2012). Criminal Justice in Action: The Core. (6th ed.). Belmont, CA: Wadsworth/Cengage Learning.
- Marion N. A. (2002). Community Corrections in Ohio: Cost Savings and Program Effectiveness. Retrieved from: www.justicepolicy.org/uploads/justicepolicy/documents/ohio_community.pdf
- Pollock, J. (2012). Ethical Dilemmas & Decisions in Criminal Justice. (7th ed.). Belmont, CA: Wadsworth/Cengage Learning.
- Siegel, L., & Bartollas, C. (2011). Corrections Today. Belmont, CA: Wadsworth/Cengage Learning.
- Siegel, L. (2011). Criminology: The Core. (4th ed.). Belmont, CA: Wadsworth/Cengage Learning.
- Stojkovic, S., Kalinich, D., & Klofas, J. (2012). Criminal Justice Organizations: Administration and Management. (5th ed.). Belmont, CA: Wadsworth/Cengage Learning.